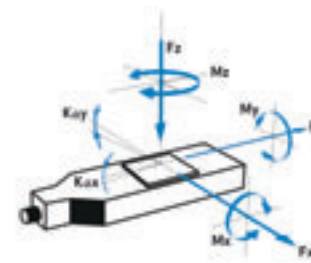


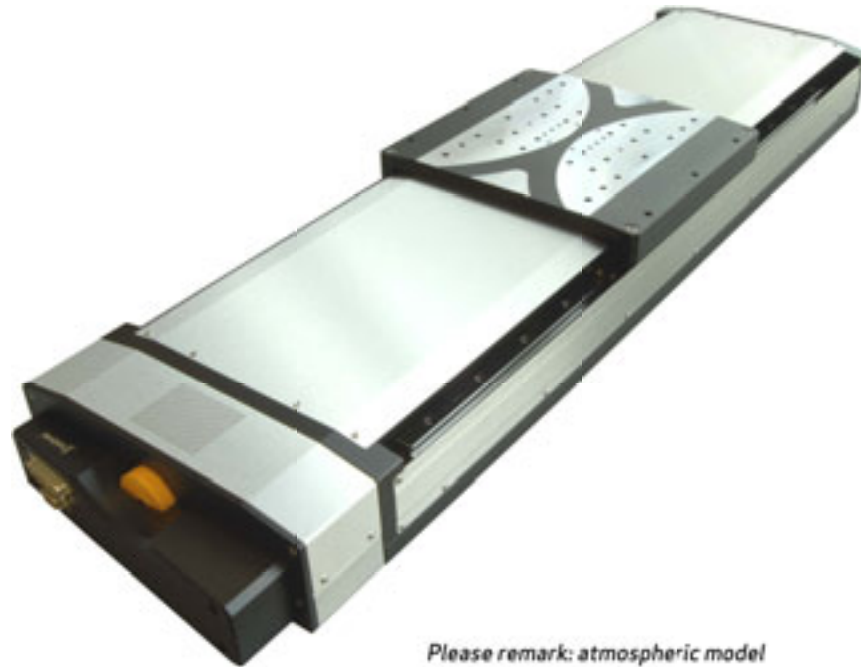


FACTS

Load characteristics	$F_x(N)$	$F_y(N)$	$F_z(N)$	$M_x(Nm)$	$M_y(Nm)$	$M_z(Nm)$	$k_{ax}(\mu rad/Nm)$	$k_{ay}(\mu rad/Nm)$
FV	1200	260	1500	250	280	250	3.2	1.6
HV	1200	260	1500	250	280	250	3.2	1.6
UHVG	1200	260	2500	250	280	250	3.2	1.6



The LS-270 Vacuum linear stage was developed for positioning high loads. Cross-roller bearings mounted on a rigid tempered aluminum-alloy body guarantee very high guiding stiffness and long operating life. The ball screw with 5 mm pitch allows velocities up to 15 mm/s. For demanding positioning tasks the LS-270 Vacuum linear stages can be supplied with a linear scale which is centrally installed between the guides. The LS-270 Vacuum linear stages is equipped with a special 2-phase vacuum stepper motor and have two limit switches.



Please remark: atmospheric model

KEY FEATURES

- Vacuum up to 10-9 hPa
- Travel range up to 1016 mm (40")
- Uni-directional repeatability down to 0.05 μm
- Maximum speed 15 mm/sec
- Load capacity up to 150 kg
- Integrated limit switches
- Option: linear scale (center mounted)

TECHNICAL DATA

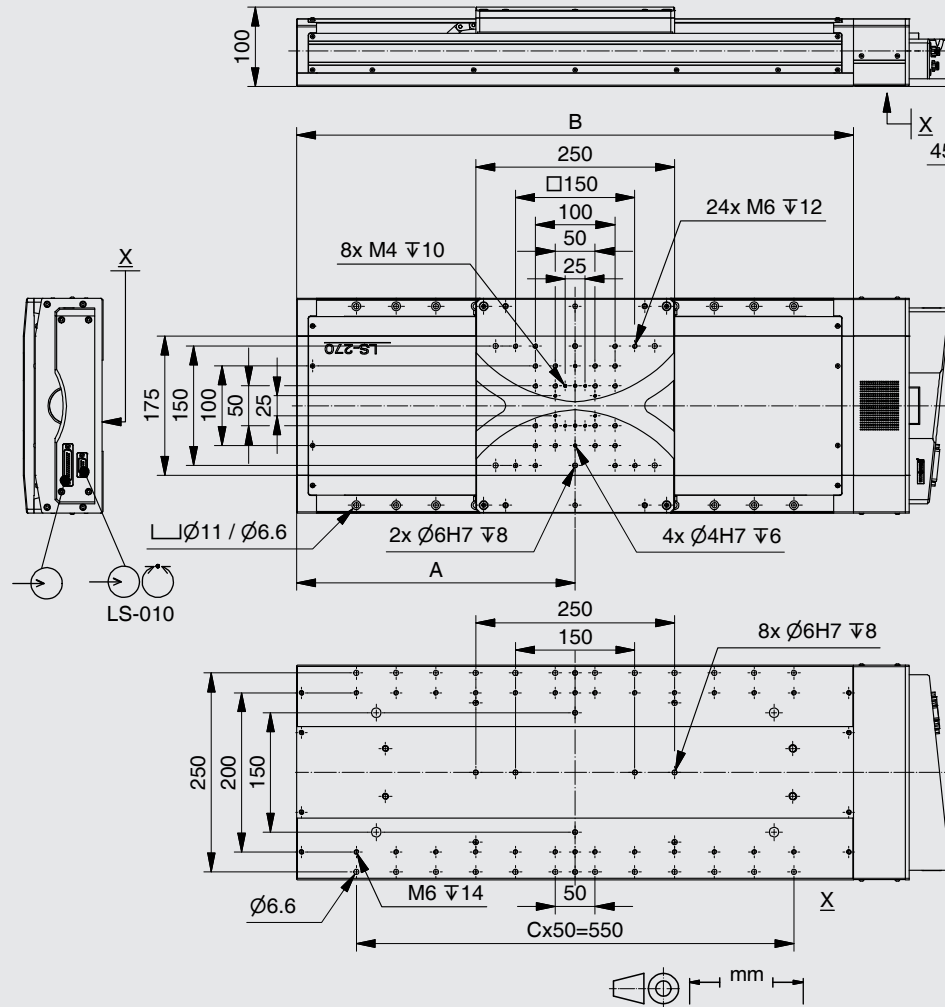
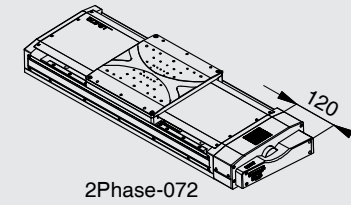
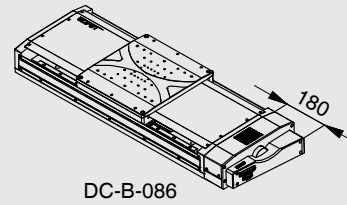
Travel range (mm)	155	305	508	815	1015
Straightness / Flatness (μm)	± 1.5	± 3	± 4	± 7	± 10
Pitch (μrad)	± 20	± 40	± 80	± 100	± 120
Yaw (μrad)	± 20	± 20	± 30	± 40	± 50
Weight (kg)	25	29	35	43	50

Vacuum type	FV	HV	UHVG		
Linear scale				FV	UHV
Speed max. (mm/sec)	15	6	6		
Resolution calculated (μm)	12.5 (FS)	25 (FS)	25 (FS)	0.05	0.05
Resolution typical (μm)	0.4	0.4	0.4	0.05	0.05
Bi-directional Repeatability (μm)	± 2.5	± 2.5	± 2.5	± 0.04	± 0.04
Uni-directional Repeatability (μm)	0.4	0.4	0.4	0.05	0.05
Nominal Current (A)	2	5	5		

Accuracy	on request
Velocity range (mm/sec)	0.01 ... 15
Material	Aluminum or Stainless steel, suitable for vacuum

Vacuum Note: FS = full step, RE = rotary encoder
More info: Detailed information concerning motors and encoders, see appendix.

Travel (mm)	155	305	508	815	1015
A	275	350	450	600	700
B	550	700	900	1200	1400
C	9	11	15	21	25



- APPLICATIONS
- CONTROLLERS
- ROBOTICS
- LINEAR STAGES**
- ROTATION STAGES
- PIEZO STAGES
- ACCESSORIES
- APPENDIX

- UPM-160
- HPS-170
- LS-270**
- LS-180
- LS-120
- LS-110
- PLS-85
- LS-65
- MTS-65
- MTS-70
- VT-80
- LS-40
- MCS
- NPE-200
- UPL-120
- ES-100
- ES-82
- MA-35
- MP-20
- MP-20 B
- MP-15

Order No.	6239-V-				0	0
FV		1				
HV		2				
UHV		3				
155 mm (6")		1				
305 mm (12")		2				
508 mm (20")		3				
815 mm (32")		4				
1016 mm (40")		5				
open loop		0				
closed loop		1				