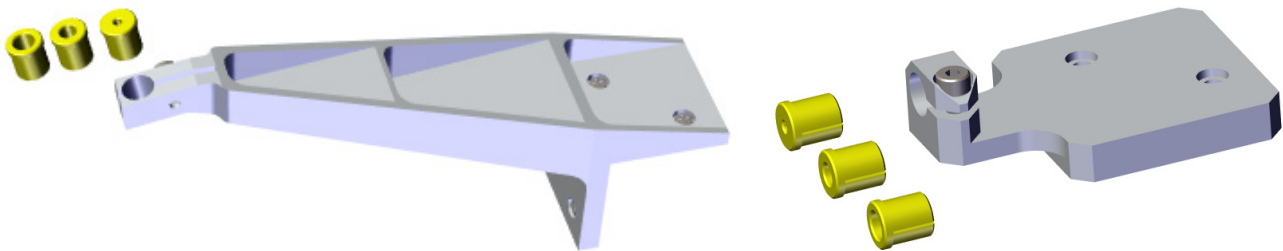


F-603.41 / F-603.42 / F-603.43

Fiber holders for P-616-type (NanoCube®) piezo positioners



Fiber holders with included ferrules, *schematic* spatial view from half-top
(left: models F-603.41 and F-603.42, right: model F-603.43)

Contents

Features	2
Scope of Delivery (Hardware)	2
Other Applicable Documents	2
Component Designations	3
Mounting Procedure	4
Models F-603.41 / F-603.42	4
Model F-603.43	7
Dimensions	9
F-603.41	9
F-603.42	9
F-603.43	10

Features

These fiber holders can be mounted onto P-616 type or dimensionally compliant NanoCube® piezo positioners. Included are 3 different ferrules for fiber attachment.

Scope of Delivery (Hardware)

Product code	Item	Included in model F-603		
		.41	.42	.43
F603E0053	Fiber holder	1	-	-
F603E0056	Fiber holder	-	1	-
F603E0058	Fiber holder	-	-	1
F603E0068	Optical ferrule 3.2 mm	1	1	1
F603E0067	Optical ferrule 2.5 mm	1	1	1
F603E0066	Optical ferrule 1.25 mm	1	1	1
000021380	Mounting screw JCIS #0 M2x4	6	6	2

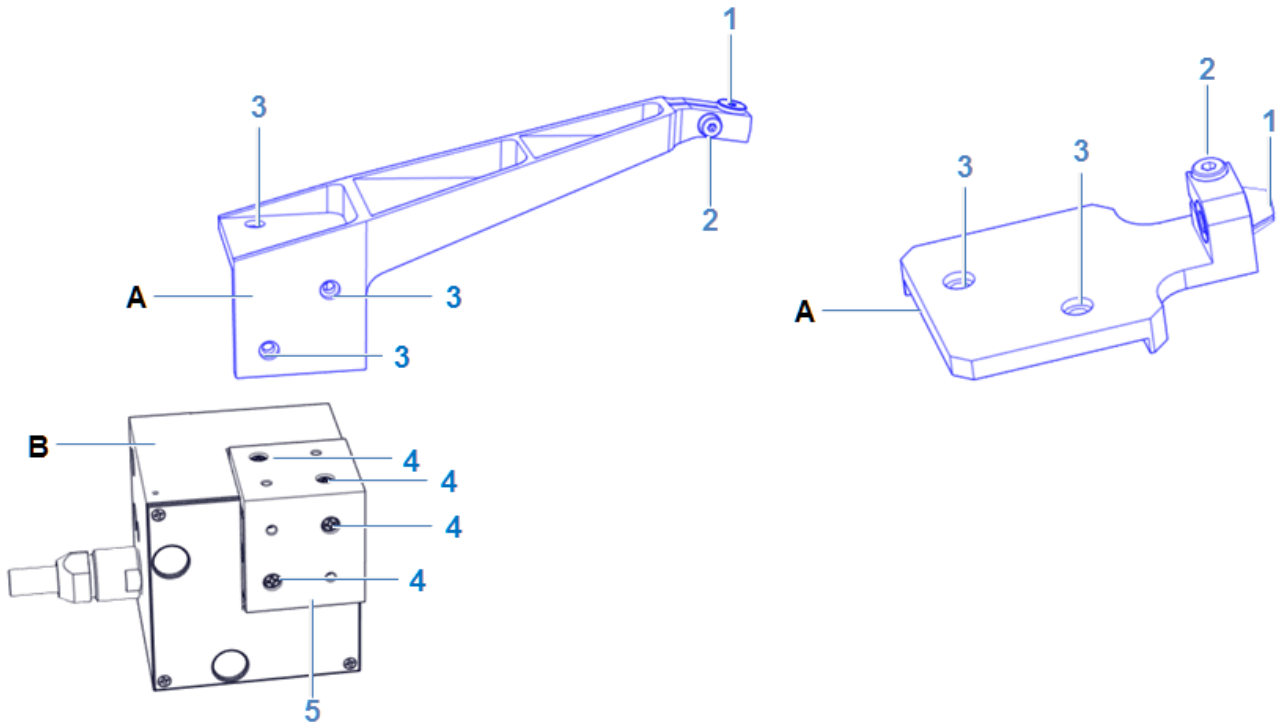
Other Applicable Documents

Product	Document
P-616	PZ268 User Manual for the P-616 NanoCube® XYZ Nanopositioner
P-616K001	P616T0001 Technical Note for P-616K001
Piezo positioning systems	PZ240EK Short Instructions P-5xx / P-6xx / P-7xx

You can download user manuals for standard products from our web site www.pi.ws

Component Designations

Schematic illustrations; for information on exact shape and dimensions, see section "Dimensions".



Ref.	Qty. total per model	Component
A	1	Fiber holder (left: model F-603.41/ F-603.42, right: model F-603.43)
B	- (not included in the product, 1 required for assembly)	NanoCube® positioner
1	3 (different)	Optical ferrule
2	1	Clamping screw
3	6 (models F-603.41 and F-603.42) / 2 (model F-603.43)	Mounting hole
4	6	Mounting screw for metal cap
5	1	Metal cap

Mounting Procedure

Models F-603.41 / F-603.42

In the following sections, the procedure is described and illustrated for a sample ferrule from the scope of delivery. For the other included or compliant ferrules, the same procedure applies.

Requirements

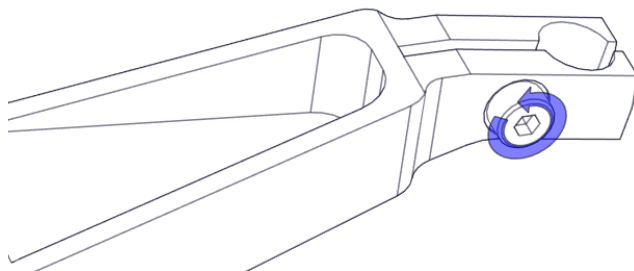
- The NanoCube® piezo stage is not connected to the controller or the controller power is switched OFF.

Tools and Accessories

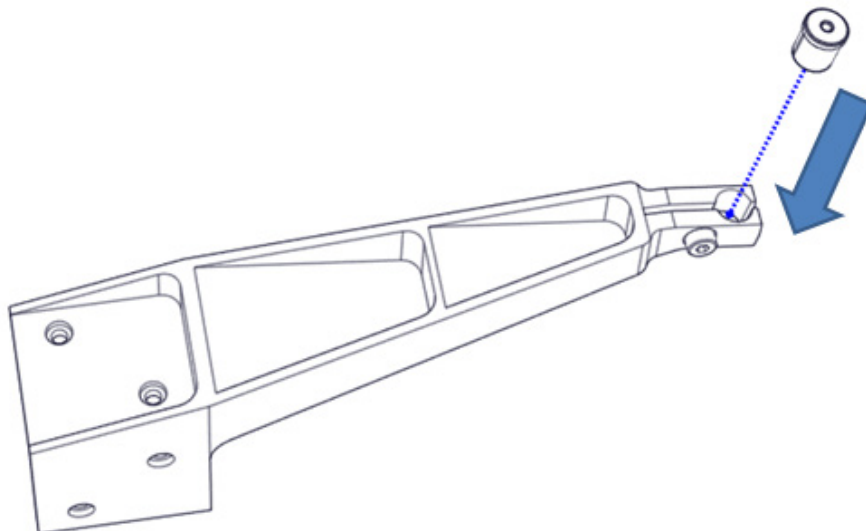
- Hex key AF 1.5 or corresponding tool
- Philipps head screwdriver PH 0 or corresponding tool
- 6 mounting screws JCIS M2x4 (included in the scope of delivery)

Procedure

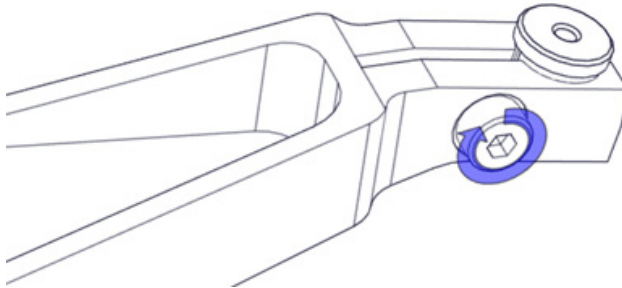
1. With the hex key, loosen the clamping screw. It is **not** required to remove the screw.



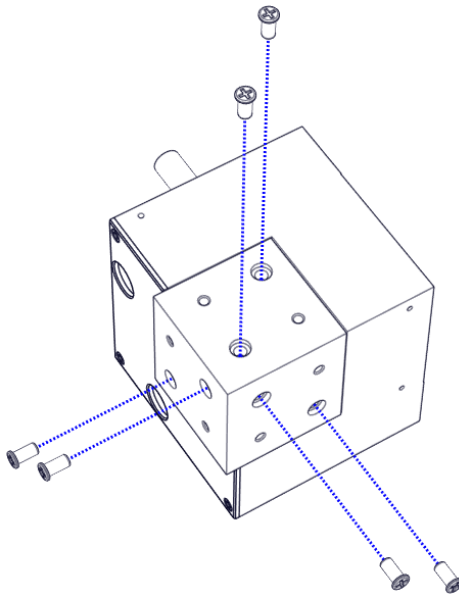
2. Insert the chosen ferrule in the fiber holder.



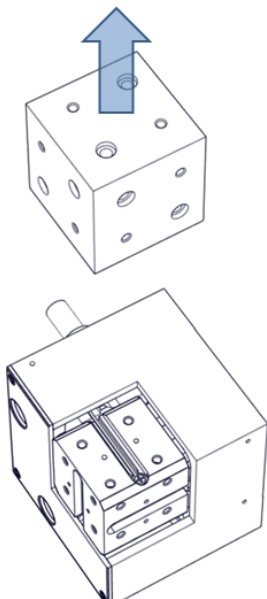
3. With the hex key, fasten the clamping screw (see illustration below). Do **not** exceed a torque of 0.2 Nm.



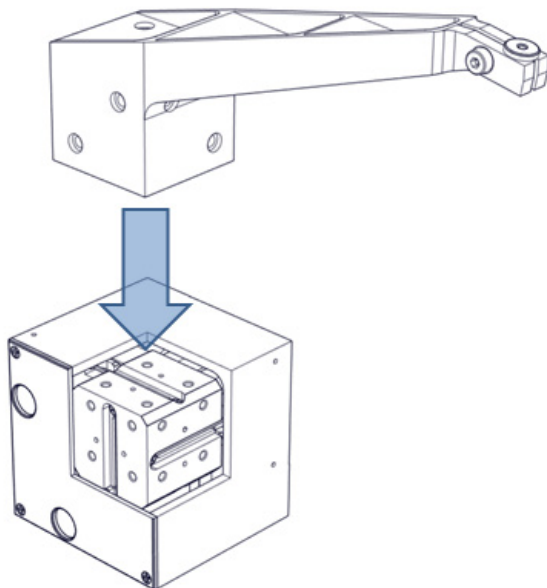
4. Using the Phillips head screwdriver, remove the mounting screws of the NanoCube[®] positioner's metal cap.



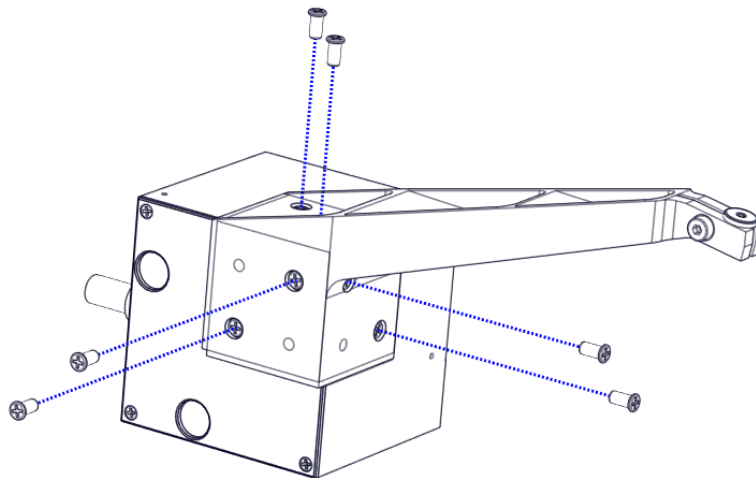
5. Remove the metal cap of the NanoCube[®] positioner and keep it in a safe place.



6. Place the fiber holder onto the NanoCube® positioner as shown below.



7. Using the Philipps head screwdriver, mount the mounting screws as shown in the illustration. Do **not** exceed a torque of 0.2 Nm.



8. Insert the fiber in the ferrule.

Model F-603.43

In the following sections, the procedure is described and illustrated for a sample ferrule from the scope of delivery. For the other included or compliant ferrules, the same procedure applies.

Requirements

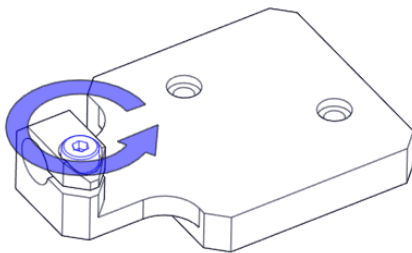
- The NanoCube® piezo stage is not connected to the controller or the controller power is switched OFF.

Tools and Accessories

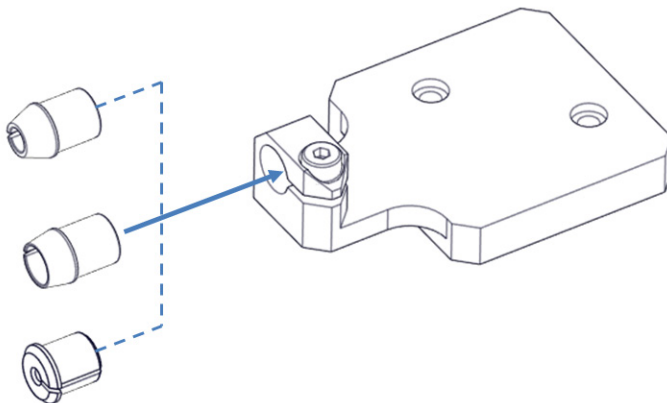
- Hex key AF 1.5 or corresponding tool
- Philipps head screwdriver PH 0 or corresponding tool
- 2 mounting screws JCIS M2x4 (included in the scope of delivery)

Procedure

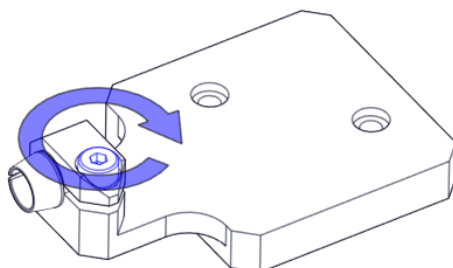
1. With the hex key, loosen the clamping screw. It is **not** required to remove the screw.



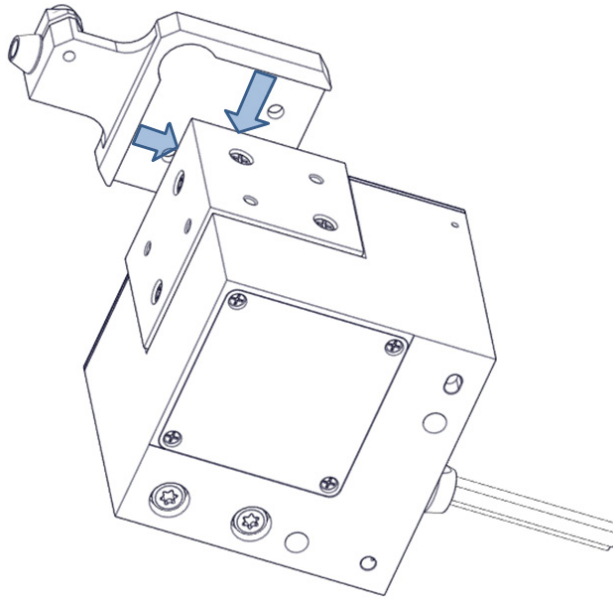
2. Insert the chosen ferrule in the fiber holder.



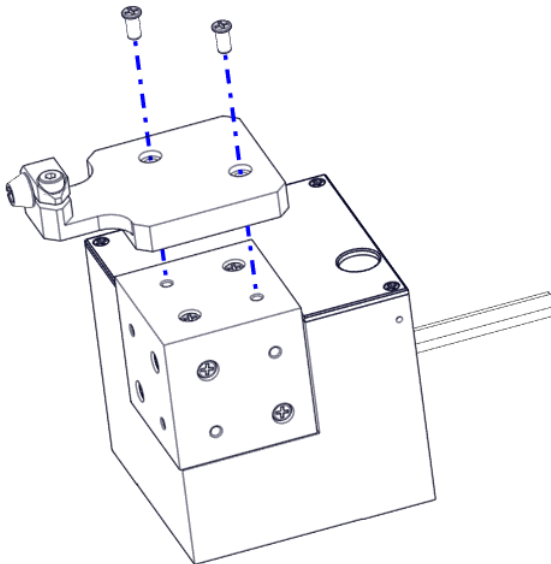
3. With the hex key, fasten the clamping screw (see illustration below). Do **not** exceed a torque of 0.2 Nm.



4. Align the mounting holes of the fiber holder with the corresponding mounting holes of the piezo positioner (see illustrations below). For easy adjustment, align the stop edges of the fiber holder with the corresponding edges of the piezo positioner.



5. With the Philipps head screwdriver, mount the mounting screws as shown in the illustration. Do **not** exceed a torque of 0.2 Nm.



6. Insert the fiber in the ferrule.

User Manual

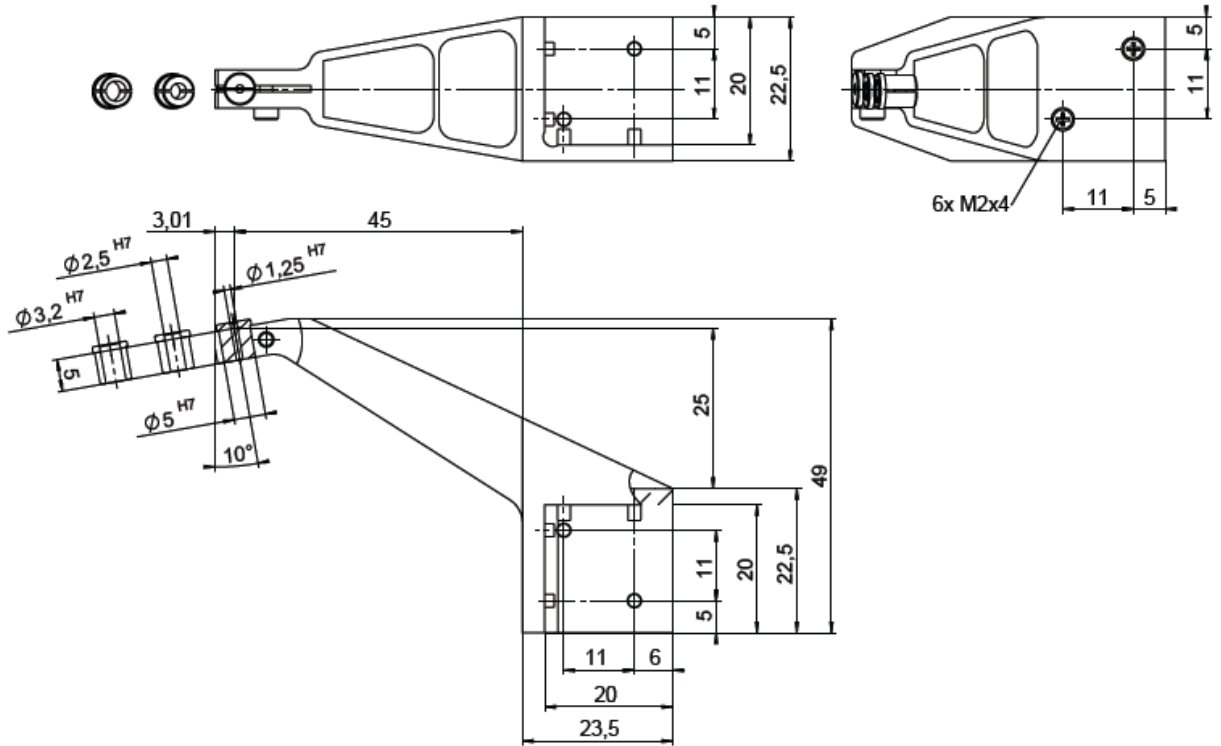
F603T0003, applies to F-603.41 / F-603.42 / F-603.43
MMa, 11/28/2018



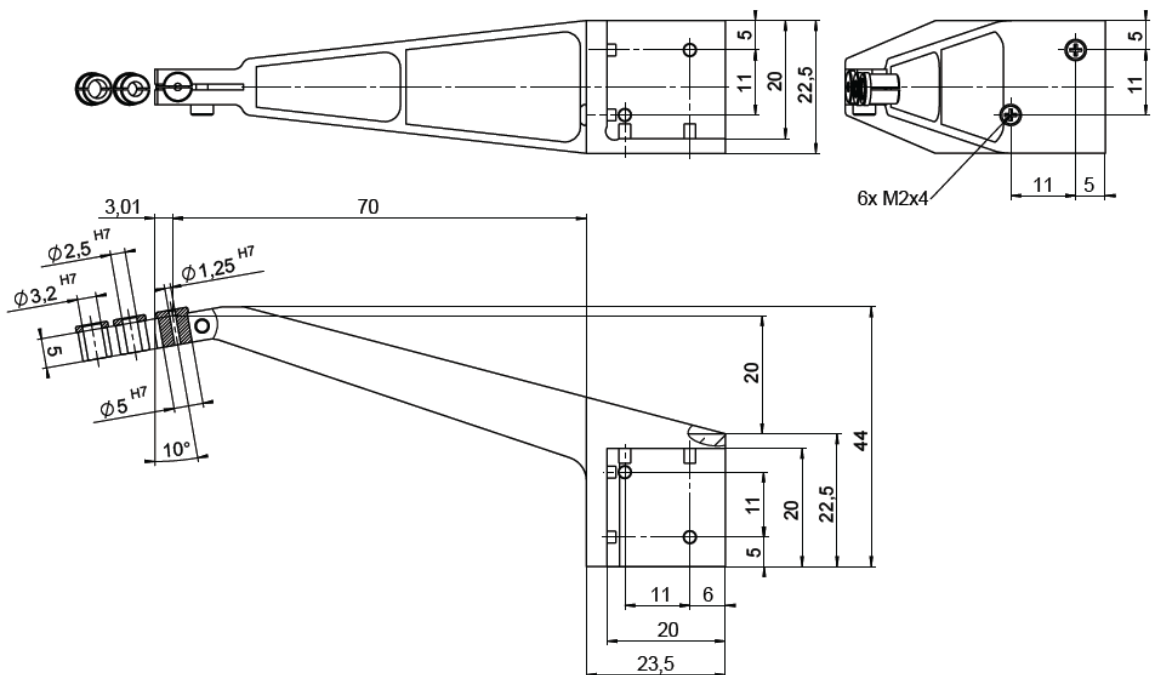
Dimensions

Values in mm, decimal places separated by commas.

F-603.41



F-603.42



User Manual

F603T0003, applies to F-603.41 / F-603.42 / F-603.43
MMa, 11/28/2018

F-603.43

